

River Alliance of Wisconsin: Before and after images of Wisconsin Dam Removals

1. FRANKLIN DAM, SHEBOYGAN RIVER

Franklin Dam, Sheboygan River
Removed 2001



Photo simulation of the Franklin Dam
site after dam removal



Actual site 9 months after removal of
the Franklin Dam



2. WILLOW FALLS DAM, WILLOW RIVER

Photo of Willow Falls Dam, Willow River
Removed 1992



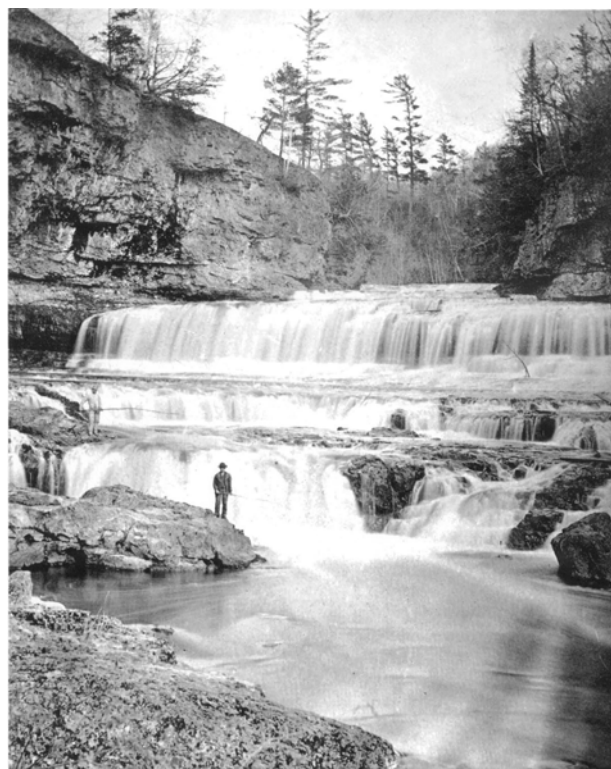
Site of former dam at Willow Falls,
Willow River



Former impoundment of Willow Falls
Dam, 6 years later



Historical Willow Falls, 1800s



Photos courtesy of the River Alliance of Wisconsin, contact Helen Sarakinos at hsarakinos@wisconsinrivers.org

3. WATERWORKS DAM, BARABOO RIVER

Waterworks Dam, Baraboo River
Removed 1997-98



Waterworks Dam removal, Winter 97-98



Photos courtesy of the River Alliance of Wisconsin, contact Helen Sarakinos at hsarakinos@wisconsinrivers.org

Waterworks impoundment,
Baraboo River



Former Waterworks impoundment,
Baraboo River
12 months after removal

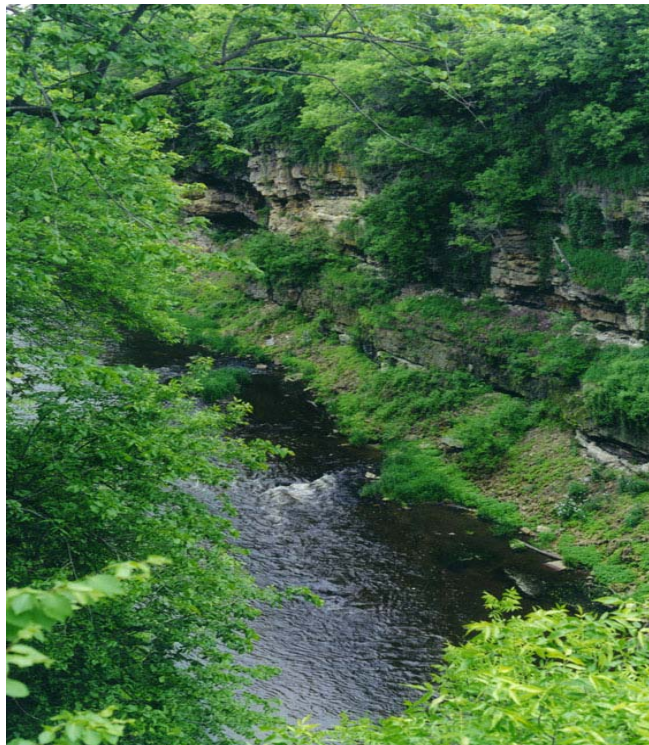


4. MOUNDS DAM, WILLOW RIVER

Photo of Mounds Dam, Willow River
Removed 1998



Site of former Mounds Dam, Willow River



Photos courtesy of the River Alliance of Wisconsin, contact Helen Sarakinos at hsarakinos@wisconsinrivers.org

Former impoundment of Mounds Dam,
1 week after removal



Former impoundment of Mounds Dam,
15 months after removal



5. WOOLEN MILLS DAM, MILWAUKEE RIVER

Photo of Woolen Mills Dam,
Milwaukee River. Removed 1988



Former impoundment of Woolen
Mills Dam, 1 week after removal



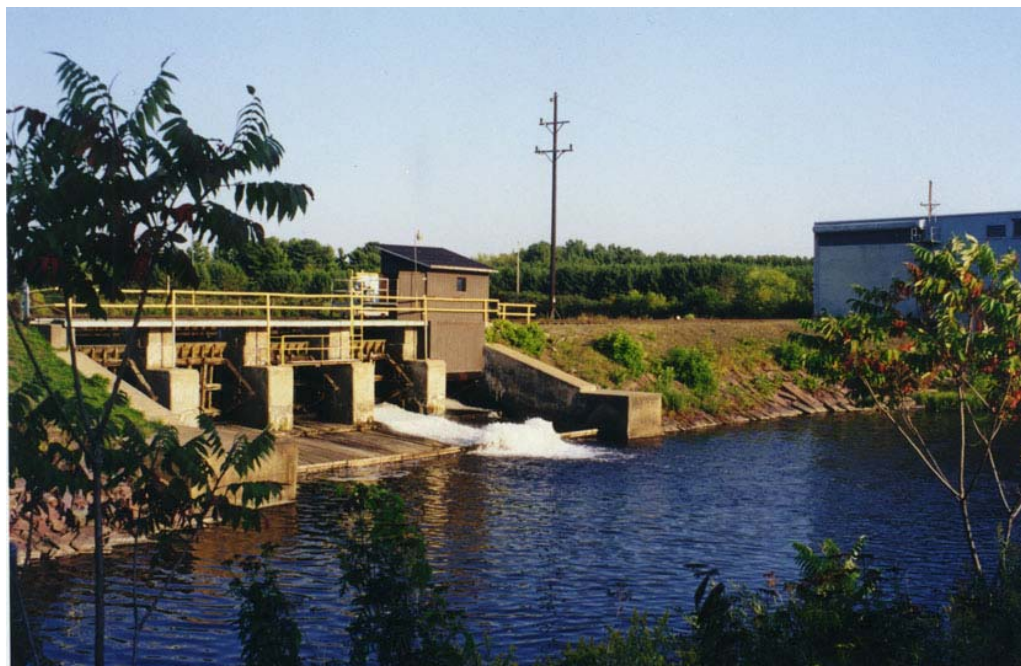
Former impoundment of Woolen Mills Dam, 12 years after removal.



Photos courtesy of the River Alliance of Wisconsin, contact Helen Sarakinos at hsarakinos@wisconsinrivers.org

6. WARD DAM, PRAIRIE RIVER

Photo of Ward Dam, Prairie River.
Removed 1999



Former impoundment of Ward Dam, 2
weeks after removal



Photos courtesy of the River Alliance of Wisconsin, contact Helen Sarakinos at hsarakinos@wisconsinrivers.org

Former impoundment of Ward Dam, 1
year after removal



Former impoundment of Ward Dam, 2
years after removal



7. COLFAX DAM, EIGHTEEN MILE CREEK

Colfax Dam



Removal Process, Winter 1998



Photos courtesy of the River Alliance of Wisconsin, contact Helen Sarakinos at hsarakinos@wisconsinrivers.org

Former impoundment of Eighteen Mile
Creek,
immediately after removal



Former impoundment of Eighteen Mile
Creek, 15 months after removal



Photos courtesy of the River Alliance of Wisconsin, contact Helen Sarakinos at hsarakinos@wisconsinrivers.org